

TELSMITH

an Astec company



TOTAL VALUE:

For more than 100 years, Telsmith has set the industry standard for performance and profitability in jaw crushing equipment. We've successfully partnered with generations of aggregate and mining professionals, who have learned to trust Telsmith to deliver consistent performance and the lowest possible cost per ton.

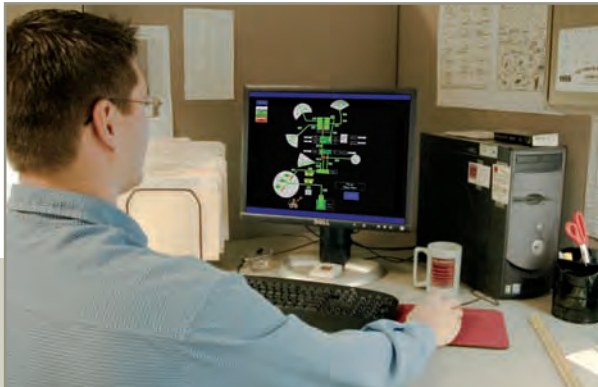
Today's Telsmith jaw crushers achieve an even higher standard, both in industry-leading productivity and uptime availability. At every step, from initial needs assessment through years of service, Telsmith people and products are the benchmark for quality and customer responsiveness.

- **Expertise:** Application engineers listen to you and help develop solutions that work.

- **Engineering:** Utilizing modern design tools, Telsmith engineers develop reliable crushers with unique features for the most efficient processing of stone.

- **Quality:** Manufacturing craftsmen combine the precision of an ISO 9001: 2000 environment and CNC machining with the skill of dedicated master welders.

Engineering



Expertise



Quality

• **Parts Availability:** Standard parts inventories and people who know the machines are in place to insure a quick turnaround.

• **Field Service:** On-site service comes from a team of technical specialists ready to respond to a downtime emergency. In the USA, several Telsmith specialists are placed in strategic locations around the country to reduce travel and improve availability.

• **Training:** Seminar support teaches your staff how to maintain and operate your Telsmith equipment for optimum performance.

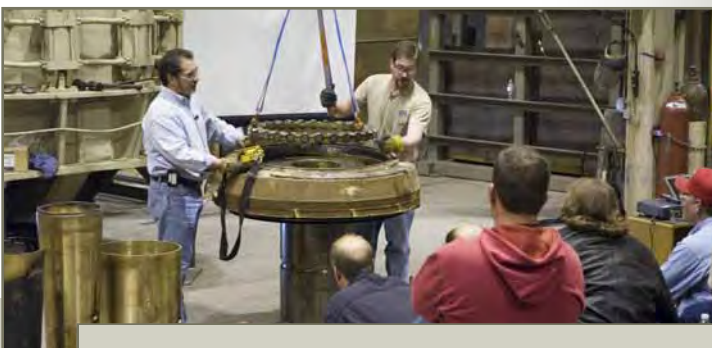
You can count on the Telsmith team to provide the service, solutions and support before, during and after your purchase. We are committed to ensuring your satisfaction.

A century of experience means we've established a solid understanding of industry needs, and we use that expertise to ensure that each crusher we manufacture has the consistent performance, reliability and productivity you demand.

Parts Availability



Training



Field Service

VERSATILELY:

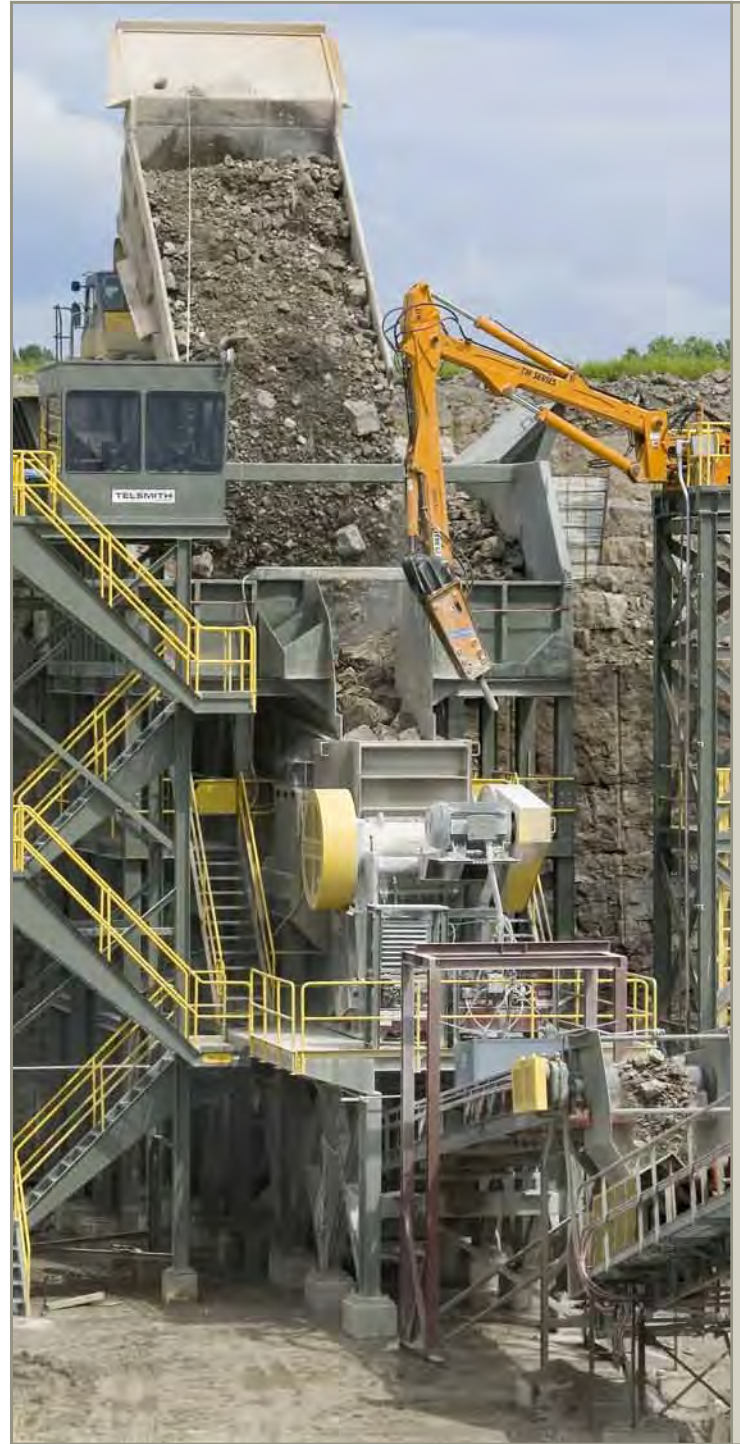
The TelSmith jaw crusher line offers versatile solutions for the aggregate producer looking to optimize productivity. Each group of models incorporates different features for solutions to different application requirements. This customer driven, solution based approach to jaw crusher design creates the most versatile line of jaw crushers available.

Iron Giant™ Models 4448 & 5060: Designed with long crushing chambers and shallow nip angles, the Iron Giant™ models are specifically designed for productivity and longevity in the hardest quarry crushing environments.

Model 3858: Featuring hydraulic chamber clearing and over-load relief the 3858 model is ideally suited for operations that may experience occasional tramp metal or power interruptions that stall the crusher.

Model 3258: Hydraulic adjustment and tramp iron protection sets a new standard for ease of operation. A machine with a relatively low profile but wide crushing chamber, the 3258 is designed for high production crushing in quarries or recycle operations.

Models 1021 thru 3042: Durable yet economic designs for the portable contractor or sand and gravel producer, these models are easy to maintain, easy to operate and rugged for decades of low cost operation.



Jaw crusher model 3858 crushing limestone in a 1000 TPH processing plant.