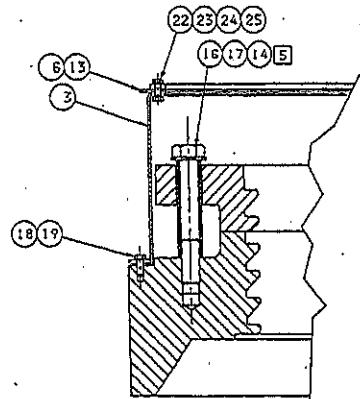
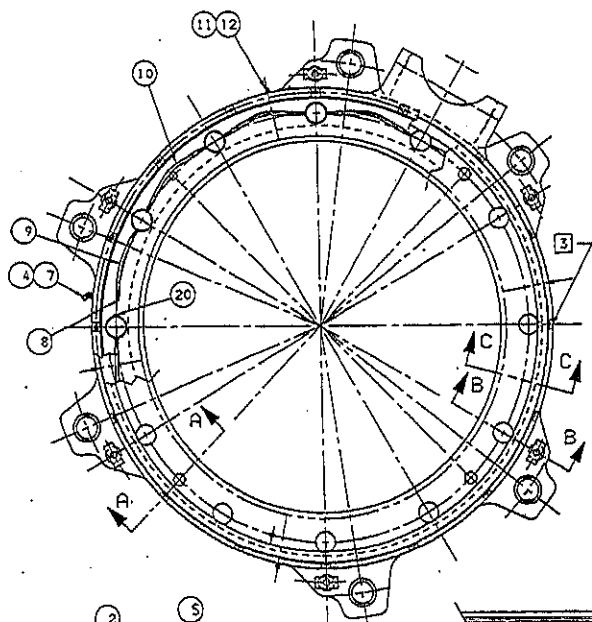


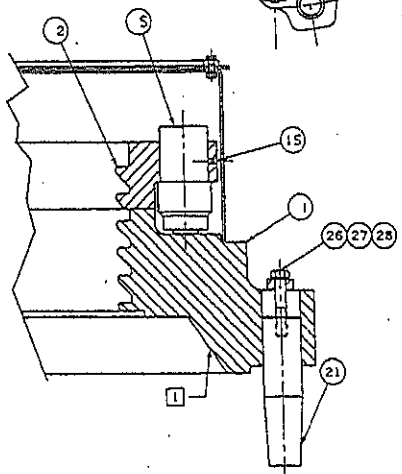
NO. 110-93050128 ALL INFORMATION CONTAINED ON THIS DRAWING IS CONSIDERED TO BE CONFIDENTIAL AND PROPRIETARY BY NORDBERG INC. NO USE OR REPRODUCTION THEREOF MAY BE MADE WITHOUT THE EXPRESS WRITTEN CONSENT OF NORDBERG INC.

NOTES :

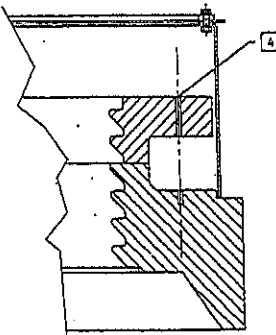
- 1 THE ADJUSTMENT RING SEAT IS TO BE COATED WITH GREASE: LITHIUM BASE NLGI NO. 1 WITH 5-10% MOLYBDENUM DISULFIDE POWDER.
- 2 ALL HYDRAULIC PASSAGES, ESPECIALLY DRILLED HOLES, SHOULD BE CLEANED THOROUGHLY BEFORE ASSEMBLY.
- 3 WHEN INSTALLING ADJUSTMENT RING ON FRAME PLACE THIS POINT OVER COUNTERSHAFT BOX.
- 4 WHEN INSTALLING CLAMP RING BE SURE THAT POSITIONING HOLE IN CLAMP RING AND ADJUSTMENT RING MATCH.
- 5 HHCS ITEM (18) IS USED TO PREVENT ACCIDENTAL LIFTING OF CLAMP RING WHEN REMOVING BOWL.
- 6 AFTER ASSEMBLY OF CLAMPING CYLINDERS AND CONNECTIONS AND BEFORE INSTALLATION OF DUST SHELL PRESSURIZE SYSTEM TO MAX OF 17.2 MPa (2500PSI) AND HOLD FOR 10 MINUTES TO CHECK CYLINDERS AND FITTINGS FOR LEAKS. HHCS ITEM (18) MUST BE INSTALLED BEFORE PRESSURE TEST.



SECTION A-A  
SCALE 1:4



SECTION B-B  
SCALE 1:4



SECTION C-C  
SCALE 1:4

◆ SURFACE PREPARATION, CLEANING AND PAINTING SYMBOLS ACCORDING TO COMPANY STANDARD 03-01-01.

BILL OF MATERIAL		QTY.	UNIT	REMARKS
ITEM NO.	PART NUMBER			
	110-93050128	1	ADJ RING ASSEMBLY	3948
(1)	1061876294	1	ADJUSTMENT RING	A02840
(2)	1061875592	1	CLAMPING RING	A1 760
(3)	1061940190	1	DUST SHELL	A1 105
(4)	1002080652	1	ELBOW 45°	
(5)	1094280065	12	CLAMPING CYL ASSY	A211.3
(6)	1064667330	4	CLAMP RING SEGMENT	A3 4.0
(7)	1008397408	1	CAP	
(8)	1002080430	1	ELBOW 90°	
(9)	1044250910	1	HOSE ASSY	A3
(10)	1044251346	1	HOSE ASSY	1
(11)	1003801023	4	GREASE FITTING	
(12)	1003801990	4	GREASE FITTING CAP	
(13)	1063519847	1	DUST SHELL SEAL	A2
(14)	1003056061	4	WASHER M36	
(15)	1002991642	12	SET SCREW M10 X 16	
(16)	1003726225	4	HHCS M36 X 240	
(17)	1073044085	4	SPACER	
(18)	1003723050	16	HHCS M12 X 30	
(19)	1003060034	16	WASHER 7/16	
(20)	1001998504	1	CAP	
(21)	1054351501	6	PIN	A3
(22)	1003722557	24	HHCS M10 X 35	
(23)	1003056028	24	WASHER M10	
(24)	1003069046	24	LOCKWASHER M10	
(25)	1003010046	24	HEX NUT M10	
(26)	1013301443	6	PIN RETAINER	A4 .9
(27)	1003724648	6	HHCS M20 X 110	
(28)	1003069066	6	LOCKWASHER M20	

sub Assemb.  
10 P0124101

ORD STORED. DO NOT CHANGE MANUALLY.

DRAWN BY: [ ]	DATE: [ ]	REVISIONS:	NO.	DATE	BY
IMPLIED TOLERANCES:	FINISHED DIMENSIONS:				
MILLIMETERS		FRAN	DEC	UNFINISHED	PROBLY
DATE: 11/03/93	BY: [ ]	DATE: 11/03/93	BY: [ ]	DATE: 11/03/93	BY: [ ]
SCALE: 1:10	PRODUCT: HP 500	DESCRIPTION:			
PART NAME: ADJ RING ASSEMBLY					
SCALE: 1:10	REV: A1	NO.:	110-93050128	REV:	A

UPDATED TO ISO9000 STD	61742
ISSUED	60808
DESCRIPTION OF CHANGE	NO.: