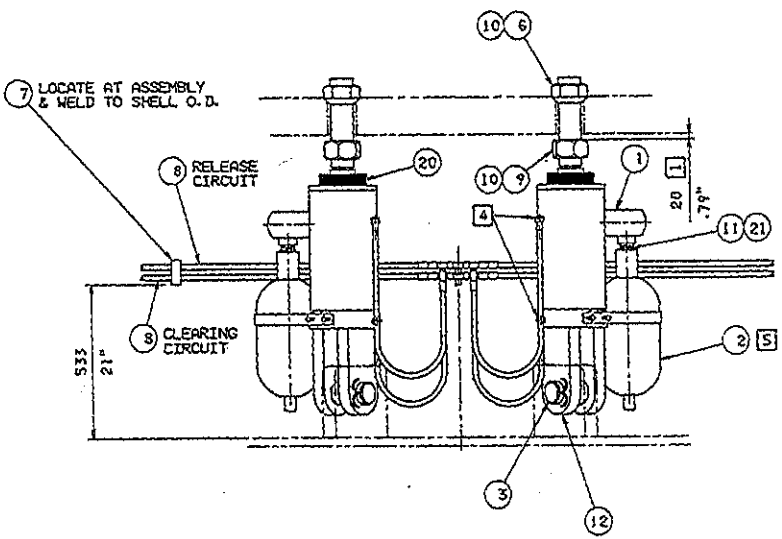
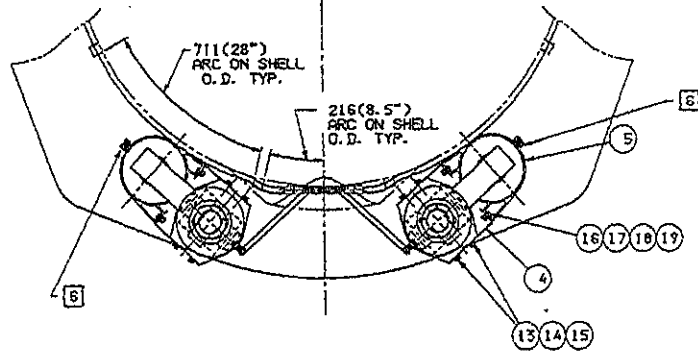


NO. 110-93040112  
 ALL INFORMATION CONTAINED ON THIS DRAWING IS CONSIDERED TO BE BOTH CONFIDENTIAL AND PROPRIETARY BY METSO MINERALS (CANADA) INC. NO USE OR REPRODUCTION THEREOF MAY BE MADE WITHOUT THE EXPRESS WRITTEN CONSENT OF METSO MINERALS (CANADA) INC.



BILL OF MATERIAL		QTY.	WT. EACH
ITEM NO.	PART NUMBER	PART NAME	
	11093040112	TRAMP RELEASE ASSY	1630
(1)	1093040030	TRAMP RELEASE CYL	A2 209
(2)	1079143402	ACCUMULATOR	A3 43
(3)	1054268776	CLEVIS PIN	A3 8.3
(4)	1021440875	BRACKET	A3 0.3
(5)	1024545536	ACCUMULATOR CLAMP	- 0.3
(6)	1051495302	SPHERICAL NUT	A4 3.0
(7)	1024709137	TUBE CLAMP	- -
(8)	1093040032	CLR & REL CIRCUIT	A2 6.0
(9)	1003010111	HEX NUT M80	- 3.0
10	1004826359	AR LOCTITE	- -
11	1002077195	UNION	- -
12	1003075458	COTTER PIN Ø 6X125	- -
13	1003723043	24 HHCS M12 X 25	- -
14	1003056031	24 WASHER M12	- -
15	1003069051	24 LOCKWASHER M12	- -
16	1003010041	12 HEX NUT M8	- -
17	1003722036	12 HHCS M8 X 20	- -
18	1003056025	24 WASHER M8	- -
19	1003069041	12 LOCKWASHER M8	- -
20	1019891330	Ø PROTECTOR	A2 -
21	1004826371	AR THREAD SEALANT	- -

- NOTES:
- WHEN INSTALLING CYLINDERS, ITEM 1, PROCEED AS FOLLOWS:
    - BEFORE INSTALLING CYLINDERS PUSH CYLINDER RODS DOWN TO BOTTOM THE PISTONS AGAINST THE LOWER HEADS.
    - TURN NUTS, ITEM 9, ONTO CYLINDER RODS, DOWN TO THE END OF THREADS.
    - TO INSTALL CYLINDERS, SLIDE CYLINDER RODS UP THRU ADJUSTMENT RING HOLES, THEN INSTALL CLEVIS PINS, ITEM 3, AND COTTER PINS, ITEM 12.
    - JACK UP CYLINDER SO THAT CLEVIS PIN CONTACTS TOP OF MAINFRAME RIB HOLE.
    - PULL RODS OUT OF THE CYLINDERS 25(.98''), NEXT COAT TOP OF RODS WITH LOCTITE, ITEM 10, THEN TURN SPHERICAL NUTS, ITEM 6, ONTO RODS UNTIL THEY BOTTOM ON ADJUSTMENT RING.
    - APPLY LOCTITE, ITEM 10, TO FOUR ROD THREADS STARTING 20(.79'') FROM THE BOTTOM OF THE ADJUSTMENT RING, THEN TURN NUTS, ITEM 9, UP THE RODS UNTIL THERE IS A 20(.79'') SPACE BETWEEN THE NUT & THE UNDERSIDE OF RING.
  - ALL COMPONENTS IN TRAMP RELEASE ASSY ARE RATED FOR 20.7 MPA (3000 PSI).
  - AFTER COMPLETE ASSEMBLY AND BLEEDING, PRESSURE TEST RELEASE & CLEARING CIRCUITS AT 20.7 MPA (3000 PSI).
  - BEFORE PLACING SYSTEM INTO OPERATION, OR AFTER MAINTENANCE ON SYSTEM, BLEED AIR FROM CLEARING & RELEASE CIRCUITS, ITEM 8, BY LOOSENING THE FITTINGS ON THE CYLINDERS AND REMOVING BLEEDER PLUG ON THE ACCUMULATOR.
  - ACCUMULATOR TO BE PRECHARGED TO 6.9 MPa (1000 psi). THE RELEASE SYSTEM IS TO BE DEPRESSURIZED WHEN PRE-CHARGING OR CHECKING PRECHARGE PRESSURE IN THE ACCUMULATOR.
  - INSTALL CAPSCREWS SO THAT HEADS OF BOLTS ARE FACING THE OUTSIDE AFTER CYLINDER AND ACCUMULATOR ARE INSTALLED ON CRUSHER.

◆ SURFACE PREPARATION, CLEANING AND PAINTING SYMBOLS ACCORDING TO COMPANY STANDARD 05-01-01.

APPROVED FOR ISSUANCE	DATE	BY
ISSUED	61736	60808
DESCRIPTION OF CHANGE	DATE	END OF CHANGE

OLD STORED, DO NOT CHANGE MANUALLY

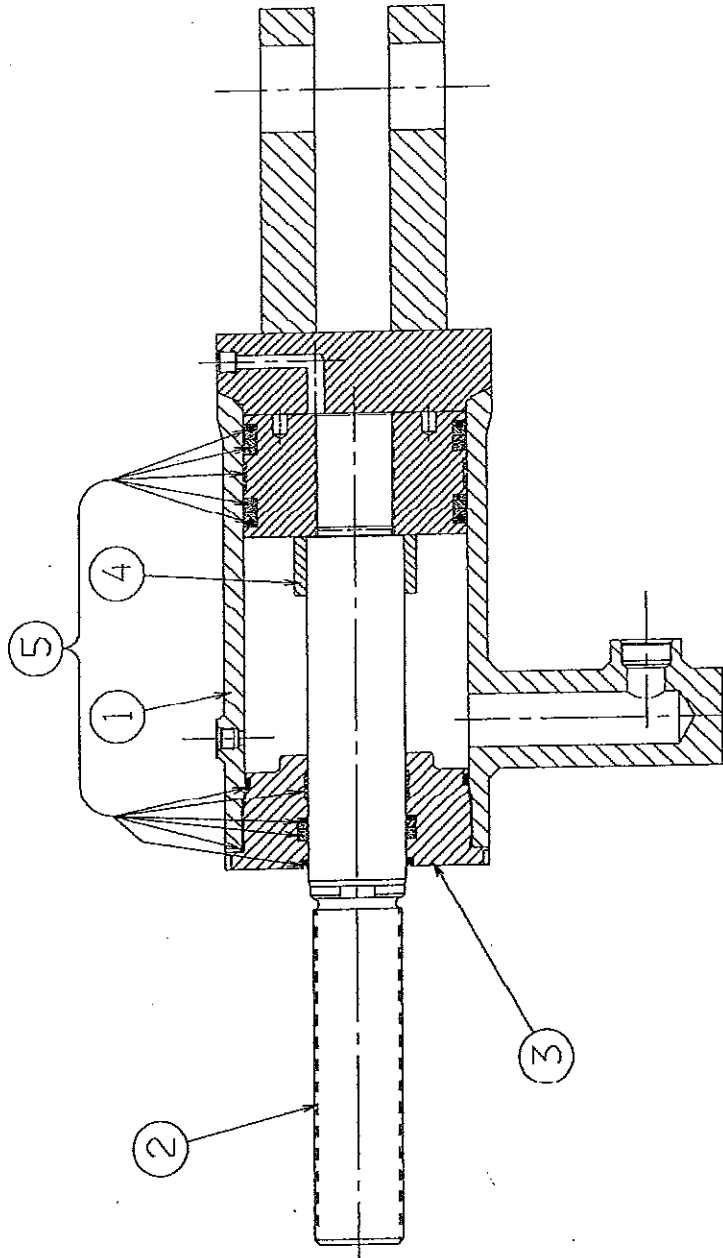
DUAL DIMENSIONS		metso minerals		Metso Minerals Inc. 3075 S. Chase Ave. Milwaukee, WI 53207	
QTY. (3000) 11	DATE 21/07/97	ISSUED BY	OR 03	CRUSHER	
QTY. (6000) 11	DATE 11/07/97	DATE 11/07/97	DATE 11/07/97	PRODUCT HP 400	
QTY. (12000) 11	DATE 11/07/97	DATE 11/07/97	DATE 11/07/97	DESCRIPTION	

TRAMP RELEASE ASSY		SCALE 1:5		PART NO. 11093040112	
DATE	BY	DATE	BY	DATE	BY

**1093040030**

TRAMP RELEASE CYLINDER  
SCHUTZVORRICHTUNG  
METALLINPÄÄSTÖSYLINTERI

VERIN DE MAINTIEN  
GATO DE SUJECIÓN  
CILINDRO DE ALÍVIO



710 9304 0030 DWG



Spare Parts Book    Catalogue des pièces de rechange  
 Ersatzteillbuch    Manual de repuestos  
 Varaosakirja    Catálogo de peças de reposição

1093040030      TRAMP RELEASE CYLINDER      VERIN DE MAINTIEN					
SCHUTZVORRICHTUNG      GATO DE SUJECIÓN					
METALLINPÄÄSTÖSYLINTERI      CILINDRO DE ALÍVIO					
ITEM REF. VIITE	PCS NBRE KPL	PART NO/NO ART. TEIL/PARTE N° OSA/CÓDIGO DA PEÇA	DESCRIPTION BENENNUNG NIMITYS	DESIGNATION DESCRIPCIÓN DESCRIÇÃO	NOTES BEMERK/NOTA HUOM.
1	1	1028563423	CYLINDER TUBE ZYLINDERGEHÄUSE SYLINTERI PUTKI	CORPS DE VERIN CUERPO DE GATO TUBO CILINDRICO	
2	1	1093040031	PISTON ROD KOLBENSTANGE MÄNNÄNVARSI	TIGE DE VERIN VASTAGO DEL EMBOLO HASTE DO PISTO	
3	1	1037711921	PISTON HEAD ZYLINDERKOPF MÄNNÄN PÄÄ	NEZ DE VERIN PUNTA DE GATO CABEA DO PISTO	
4	1	1063902196	STOP TUBE ARRETIERBUECHSE PYSÄYTYSPUTKI	BAGUE D'ARRET CASQUILLO DE PARADA TUBO DE PARADA	
5	1	N53001200 ↑ 93070046	GASKET KIT DICHTUNGSSATZ TIIVISTE KITTI 93070046	LOT JOINTS LOTE JUNTAS KIT DE VEDAES 111059 109701 (2ea)	